

An architectural rendering of a modern, multi-story building with a prominent grid facade. The building features a series of balconies and a rooftop garden. The scene is set during the day with a clear sky. The building is the central focus, with other buildings visible in the background and foreground. The overall aesthetic is clean and contemporary.

# 900

NEW YORK AVENUE

*Changing the Nature of Retail*

A GOULD | **ox|ford** | PROPERTY



# *Welcome to the land of Elevated Taste.*

900 New York Avenue is the corner anchor for CityCenterDC, a 10-acre development that features retail, residential, and commercial space as well as parking, civic, and green areas. **TAKE A LOOK INSIDE**

# Ground Floor Retail

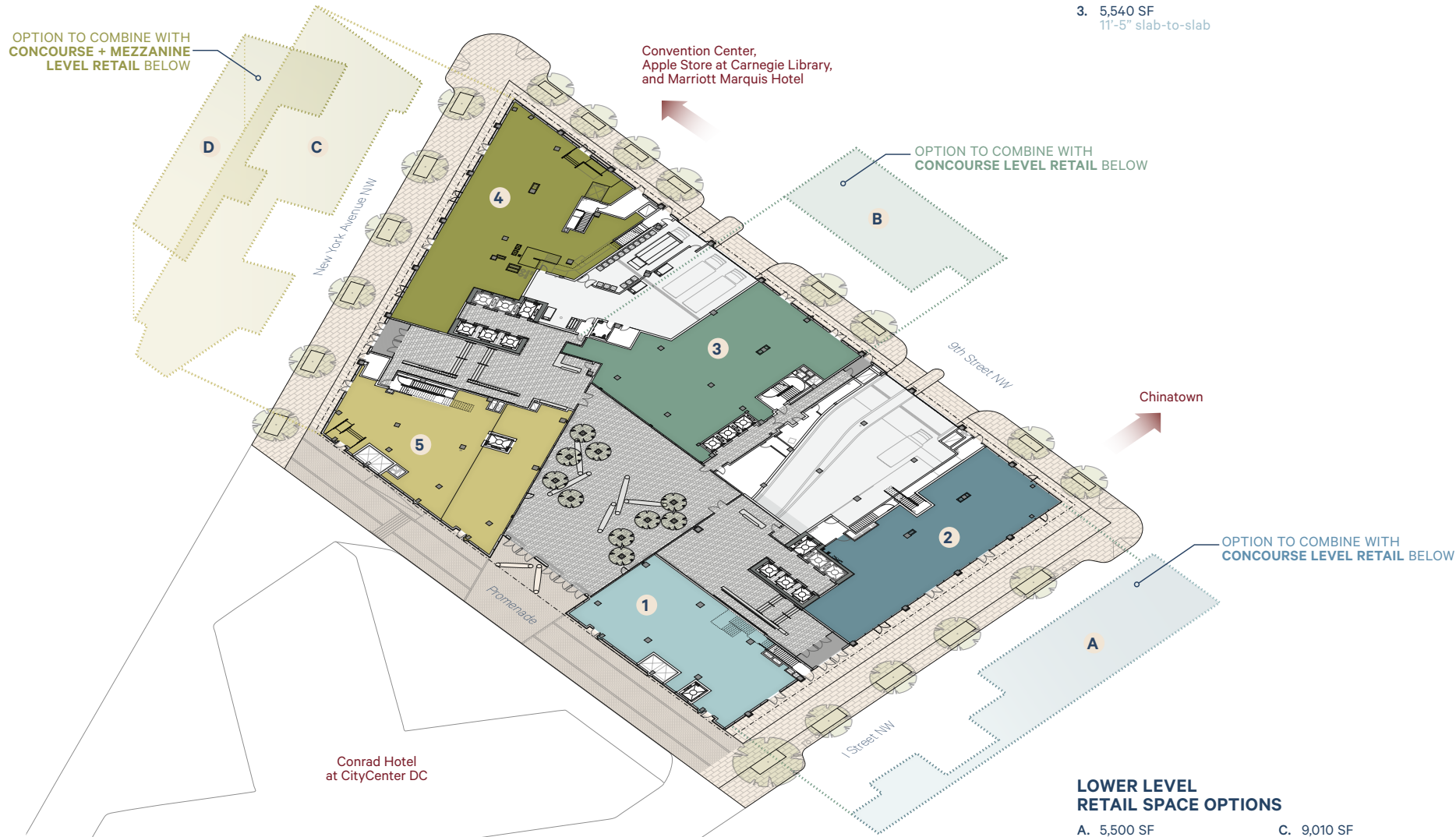
Additional space available on upper and lower levels

## GROUND LEVEL RETAIL SPACE OPTIONS

- 1. 4,280 SF  
22'-3" slab-to-slab
- 2. 4,740 SF  
13'-9" slab-to-slab
- 3. 5,540 SF  
11'-5" slab-to-slab
- 4. 6,300 SF  
17'-7" slab-to-slab
- 5. 4,280 SF  
17'-7" / 21'-0" slab-to-slab

## LOWER LEVEL RETAIL SPACE OPTIONS

- A. 5,500 SF  
16'-4" / 14'-0" slab-to-slab
- B. 3,350 SF  
16'-4" slab-to-slab
- C. 9,010 SF  
21'-0" / 10'-8" slab-to-slab
- D. 4,250 SF  
10'-4" slab-to-slab



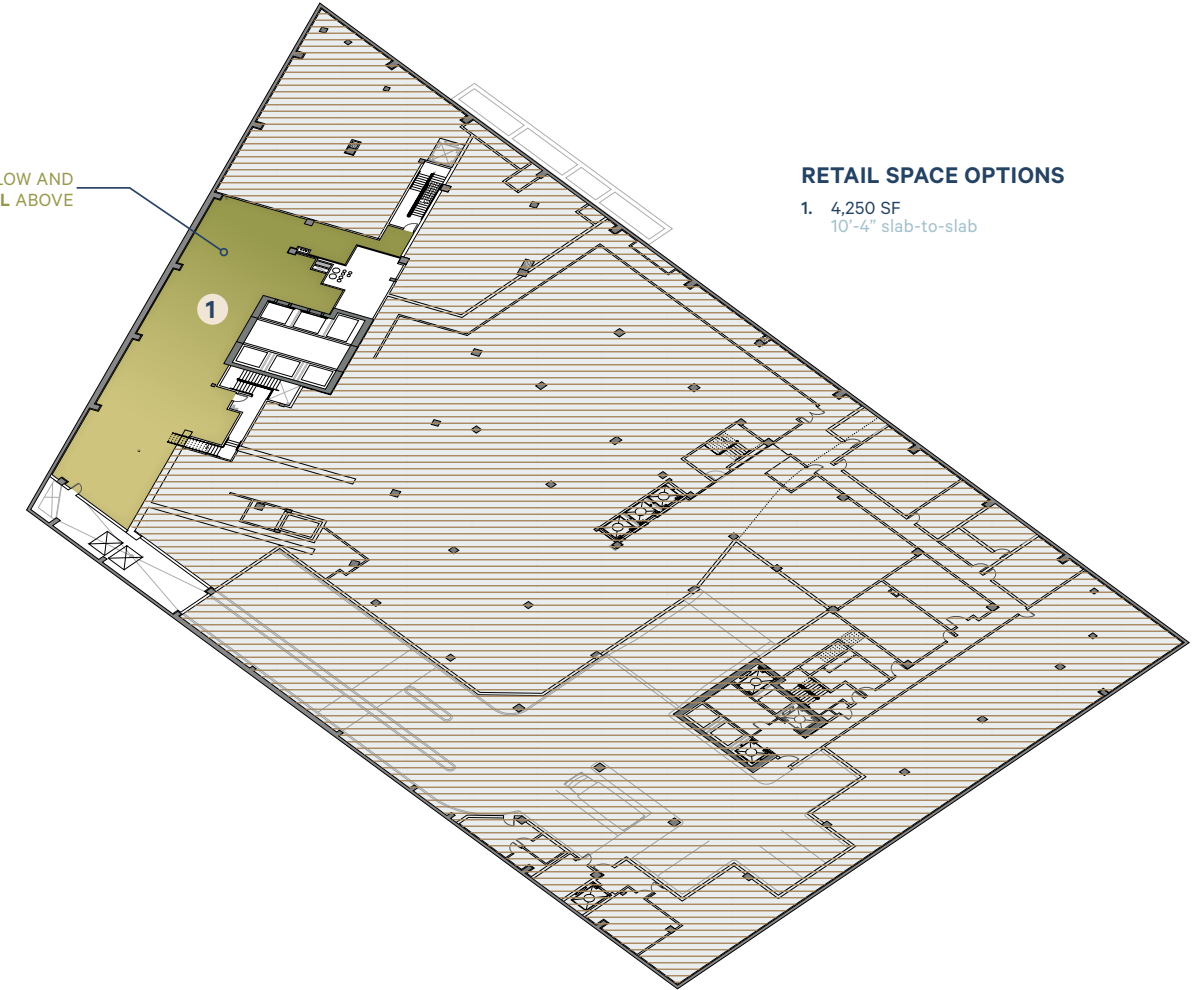
# Mezzanine Level Retail

Additional space available on concourse and ground floor

## RETAIL SPACE OPTIONS

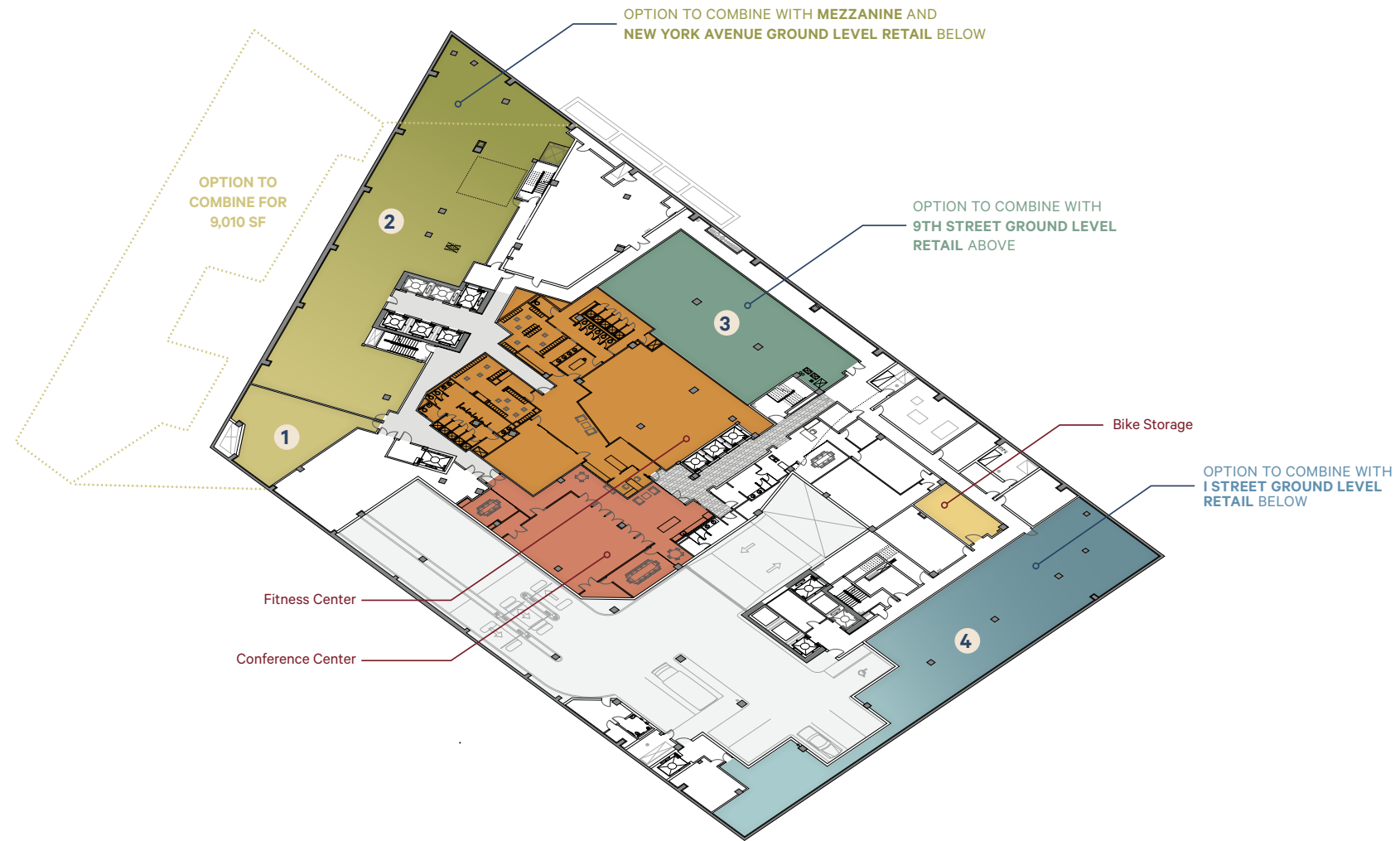
- 1. 4,250 SF  
10'-4" slab-to-slab

OPTION TO COMBINE WITH CONCOURSE BELOW AND NEW YORK AVENUE GROUND LEVEL RETAIL ABOVE



# Concourse Level Retail

Additional space available on mezzanine and ground floor



A GOULD | OXFORD PROPERTY

For Leasing Contact:

**AMANDA R. BENTON**  
(202) 467-6735  
abenton@gouldproperty.com